

DATALOGIC - SG2-B 30 HAND

SG2-30-015-OO-X

SG2-30-015-OO-X 30mm Res Type

- Hand protection (R 30), Type 2, PL d
- Range up to 19 m
- Protective height 150-1800 mm



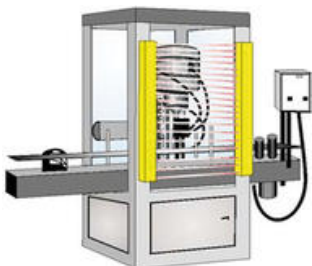
PRODUCT DESCRIPTION

Datalogic safety light curtain SG2-B Hand is made for hand detection with a range of up to 19 metres. The safety light curtain is available as type 2, and maintains level PL d according to the latest safety standards, EN ISO 13849-1 and EN 62061. SG2-B Hand has basic functions as two safe electronic short-circuit detection outputs (PNP) + test input. If potential free contacts are needed we can offer for example Duelco NST-2004 safety relay. Safety light curtain supplied complete with standard bracket.

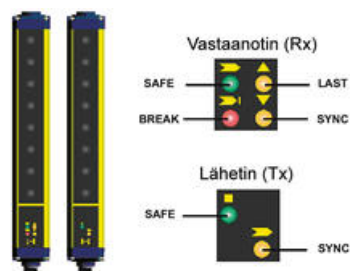
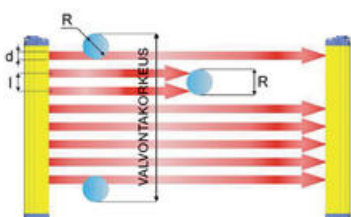
Datalogic has a 3 year warranty for safety light curtains.


Application

Hand protection ($R \leq 40 \text{ mm}$)



TECHNICAL DATA



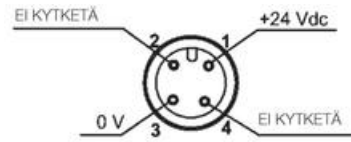
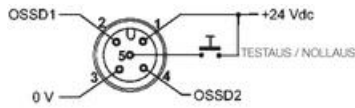
Supply voltage	24 V DC, stabilised
Tolerance	± 20 %
Max. current consumption / transmitter	2 W
Max. current consumption / receiver	3.5 W
Safe outputs (OSSD)	Transistor 2 x PNP
Max. current (OSSD)	0.5 A/each PNP
Response time	8-24 ms (depending on model, refer table "Order number")
Type of light	IR LED 950 nm
Operating distance	0.2-19 m
Protective height	150-1800 mm
Extra functions	test input
Status indication	6 x LED
Resolution R	30 mm
Cable connection	Transmitter M12, 4-pole Receiver M12, 5-pole
Max. cable length	50 m
Material housing	Aluminium profile (RAL 1003), end caps PC makrolon
Weight	1.0 kg/m
Protection class	IP65
Operating temperature	0 °C to +55 °C
Storage temperature	-25 °C to +70 °C
Safety category	2 according to EN 954-1
PL	d according to EN ISO 13849-1
SIL	2 according to EN IEC 62061
PFHd	1.04E-08
T1 (Life time in years)	20
MTTFd (years)	273
DC	97.50 %
SFF	98.40 %
Approvals	

CONNECTION

Connection of SG2-B safety light curtain

Receiver

Transmitter



Receiver (Rx), 5-pole, M12-connector

1	= brown	= +24 V DC (power supply)
2	= white	= OSSD1 (PNP)
3	= blue	= 0 V (power supply)
4	= black	= OSSD2 (PNP)
5	= grey	= test

Transmitter (Tx), 4-pole, M12-connector

1	= brown	= 24 V DC (power supply)
2	= white	= not used
3	= blue	= 0 V (power supply)
4	= black	= not used

MANUAL

SG2-B Hand

[SG2-B & SG2-E, eng](#)

ORDER NUMBERS & DIMENSIONS

Dimensions

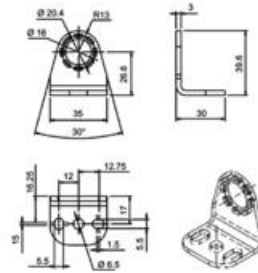
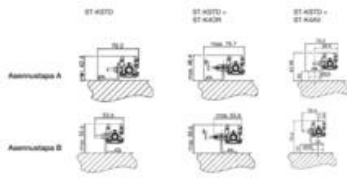


Order no.	Resolution (mm)	Protective height (mm)	Number of beams	Length housing L1 / L2 (mm)	Response time (ms)	Range (m)
Standard version						
SG2-30-015-OO-X	30	150	8	233.3 / 153.3	8	0.2 - 19
SG2-30-030-OO-X	30	300	16	383.2 / 303.2	9	0.2 - 19
SG2-30-045-OO-X	30	450	24	533.2 / 453.3	11	0.2 - 19
SG2-30-060-OO-X	30	600	32	683.2 / 603.2	12	0.2 - 19
SG2-30-075-OO-X	30	750	40	833.2 / 753.3	14	0.2 - 19
SG2-30-090-OO-X	30	900	48	983.2 / 903.2	15	0.2 - 19
SG2-30-105-OO-X	30	1050	56	1133.2 / 1053.2	17	0.2 - 19
SG2-30-120-OO-X	30	1200	64	1283.3 / 1203.3	18	0.2 - 19
SG2-30-135-OO-X	30	1350	72	1433.2 / 1353.2	20	0.2 - 19
SG2-30-150-OO-X	30	1500	80	1583.3 / 1503.3	21	0.2 - 19
SG2-30-165-OO-X	30	1650	88	1733.3 / 1653.3	22	0.2 - 19
SG2-30-180-OO-X	30	1800	96	1883.3 / 1803.3	24	0.2 - 19

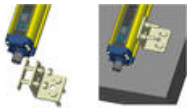
All SG2-B safety light curtains are supplied with brackets (ST-K4ROT).

ACCESSORIES

Mounting brackets



ST-K4ROT brackets. 1 kit (4 pcs.) supplied in the package



ST-KSTD brackets



ST-K4AV antivibration support
use with ST-brackets



SG-LP laser pointer

All SG2-B safety light curtains are supplied with brackets (ST-K4ROT) .

Order no.	Description
Cables	
CS-A1-02-U-05	Cable, M12, straight, 5 metres, female, 4-pole
CS-A1-02-U-10	Cable, M12, straight, 10 metres, female, 4-pole
CS-A1-02-U-15	Cable, M12, straight, 15 metres, female, 4-pole
CS-A1-02-U-25	Cable, M12, straight, 25 metres, female, 4-pole
CS-A1-03-U-05	Cable, M12, straight, 5 metres, female, 5-pole
CS-A1-03-U-10	Cable, M12, straight, 10 metres, female, 5-pole
CS-A1-03-U-15	Cable, M12, straight, 15 metres, female, 5-pole
CS-A1-03-U-25	Cable, M12, straight, 25 metres, female, 5-pole
Safety relays	
42010204	Safety relay Duelco NST-2004, 3 NO + 1 NC, 24 V DC
Brackets (extra). All SG2-B safety light curtains are supplied with standard brackets (ST-K4ROT)	
ST-K4ROT	Mounting bracket, rotatable (4 pcs. / kit)
ST-KSTD	Mounting bracket, standard (4 pcs. / kit)
ST-K4OR	Angle adjustment kit $\pm 5^\circ$ (4 pcs. / kit), use with ST-KSTD
ST-K6OR	Angle adjustment kit $\pm 5^\circ$ (6 pcs. / kit), use with ST-KSTD
ST-K4AV	Antivibration support (4 pcs. / kit)
ST-K6AV	Antivibration support (6 pcs. / kit)
SG-LP	Laser pointer

SPECIFICATIONS

Approvals	CE, cULus, TÜV
Cable Length Max	50 m
Conforming To	EMC, LVD, MD
Contact Current Max	0,5 A
DC	97,50%
Function	Automatic restart
IP Class	IP65

Material of body	Aluminium
Mttfd	273 year
Number Of Beams	8
PL	d (EN ISO 13849-1)
Protection height	150 mm
Reaction time	8 ms
Resolution	30 mm
Scope	0,2-19 m
Sensing distance	0,2-19 m
SIL	2 (EN IEC 61508)
Supply voltage	24 V DC
T1 (Life Time In Years)	20
Temperature range from	-10 °C
Temperature range to	55 °C
Voltage Tolerance	±20 %

