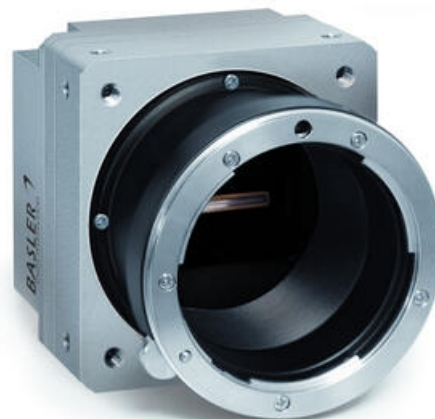


## BASLER RACER LINE SCAN CAMERAS

GigE & Cameralink Line Cameras

RAL2048-48GM  
CAM GLS M 1\*2048 48K BAS

- 2 k to 12 k resolution
- Up to 80 kHz Line Rate
- Monochrome Cameras
- GigE Vision Compatible
- Lens Mount: C-mount & F-mount



### PRODUCT DESCRIPTION

The Basler Racer Line Scan camera features a slim build of only 56mm, to easily fit into most systems, as well as being able to deliver exceptional performance even under low voltage LED lighting.

The Racer camera range is available in GigE or CameraLink with a range of resolutions from 2k to 12k, with a line rate of up to 80 kHz via camera link and up to 51 kHz via GigE.

This range of Line Scan cameras is particularly suited for applications in, web inspections (film, paper, cotton textiles), sorting and packaging (refuse, postal, foodstuffs) and transport related applications (underfloor, rail, overhead, container inspections).

### SPECIFICATIONS

IP Class	IP30
Sensor model	DR-2k-7
Operating temperature	-10°C ... 60°C
Sensor type	CMOS
Sensor supplier	Awaiba
Mono/Color	Mono
Line Speed Max	51 kHz
Resolution Max	2048 x 1 px
Weight	240 g
Sensor size	14.3 mm
Pixel size	7 x 7 µm
Length	36 mm
Width	56 mm
Digital Inputs	3
Power Consumption	3 W

<b>Lens Barrel</b>	C-mount, F-mount, M42, M58
<b>Digital Outputs</b>	2
<b>Approvals</b>	CE, EAC, FCC, GenICam, GigE Vision, RoHS, UL
<b>Height</b>	62 mm
<b>Shutter type</b>	Global
<b>Resolution</b>	2k

