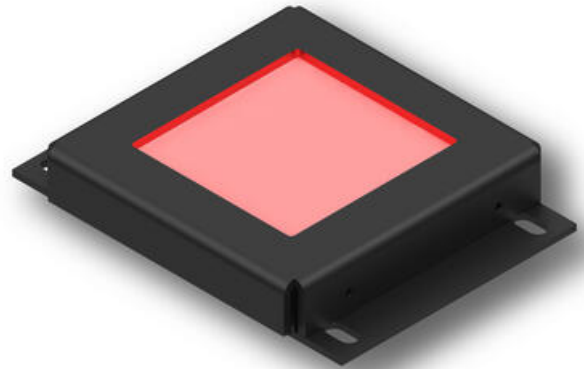


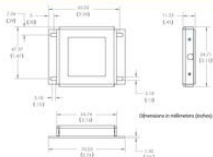
SERIE-BT
BT backlight



PRODUCT DESCRIPTION
SPECIFICATIONS

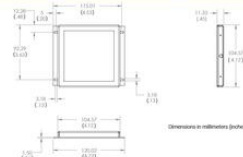
Approvals	CE, RoHS
Feed	CI, C5, IC, I3, I3S
IP Class	IP50
Life Span	50000 h
Temperature range from	0 °C
Temperature range to	60 °C
Wave-Length	WHI, 455, 520, 625, 850

Mechanical Specifications - BT050050



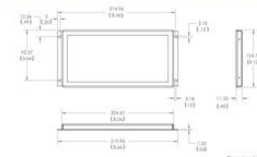
Length (mm)	70
Width (mm)	56
Height (mm)	11

Mechanical Specifications - BT100100



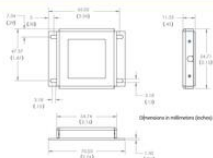
Length (mm)	120
Width (mm)	100
Height (mm)	11

Mechanical Specifications - BT200100



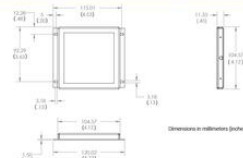
Length (mm)	200
Width (mm)	100
Height (mm)	11

Mechanical Specifications - BT050050



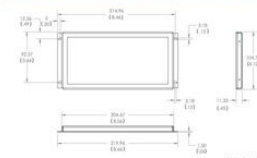
Length (mm)	70
Width (mm)	56
Height (mm)	11

Mechanical Specifications - BT100100



Length (mm)	120
Width (mm)	100
Height (mm)	11

Mechanical Specifications - BT200100



Length (mm)	200
Width (mm)	100
Height (mm)	11

