

## INDUCTIVE SENSOR, RECTANGULAR HOUSING 28X16X11

650.2973.001

IND.SEN 28X16X11 BLOCK PNP NO

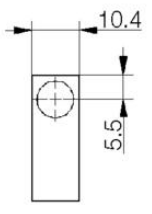
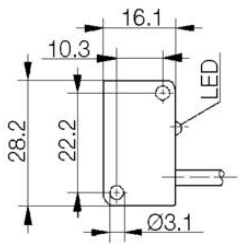
- Sensor on the narrow side of the housing
- Sensing distance 2mm
- 2m connecting cable
- M8 connector



### PRODUCT DESCRIPTION

### SPECIFICATIONS

Electrical connection	Cable 2 m
IP Class	IP67
LED	Yes
Load Max	200 mA
Material of body	Plastic
Mounting	Flush mounted
Output	PNP NO
Sensing	2 mm
Sensor type	Inductive
Size	28x16x11
Temperature range from	-25 °C
Temperature range to	70 °C
Voltage DC max	30 V
Voltage DC min	10 V



PNP – Proximity Switch

