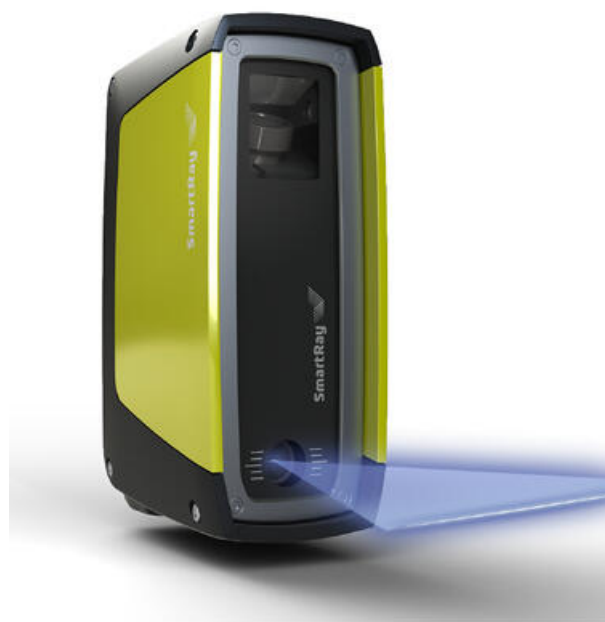


ECCO SMARTRAY 3D-CAMERA

SR95.100

SmartRay™ ECCO 95.100

- Inspection, guidance and measurement applications
- Ultra modern laser triangulation technology
- Wide selection of models to suit all needs
- Gigabit Ethernet interface



PRODUCT DESCRIPTION

SPECIFICATIONS

3D point rate	0.7 to 15 million points/sec
Ambient light max	10000 lx
EMC	EN61000-6-2, EN61000-6-4
Field of view max	124 mm
Field of view min	72 mm
Inputs	4 x Inputs, 5 – 24 VDC, Quadrature Encoder (AB-Channel, RS-422 Standard)
Interface	Gigabit Ethernet (1 Gbit/ sec)
IP Class	IP65
Laser Class	2M, 3M
Laser wavelength	450 nm
Maximum points / 3D-profile	1920
Measuring range	100 mm
Outputs	2 x Outputs, 24 VDC (max. 20 mA)
Protection Class	III according to EN 61040-3
Resolution max (Y)	70 µm
Resolution max (Z)	12 µm

Resolution min (Y)	42 μ m
Resolution min (Z)	5 μ m
Scan rate	8000 Hz
Temperature range bearing, from	-20 °C
Temperature range bearing, to	70 °C
Temperature range to	40 °C
Trigger	START Trigger support on Input 1-4, DATA Trigger support on Quadrature Encoder Input (Max. DATA trigger rate: 100 kHz), DATA Trigger support on Input 2, 3 (Max. DATA trigger rate: 10 kHz)
Weight	490 g
Voltage	24 VDC, \pm 15 % ripple , 8.5 W
Working Distance	150 mm

