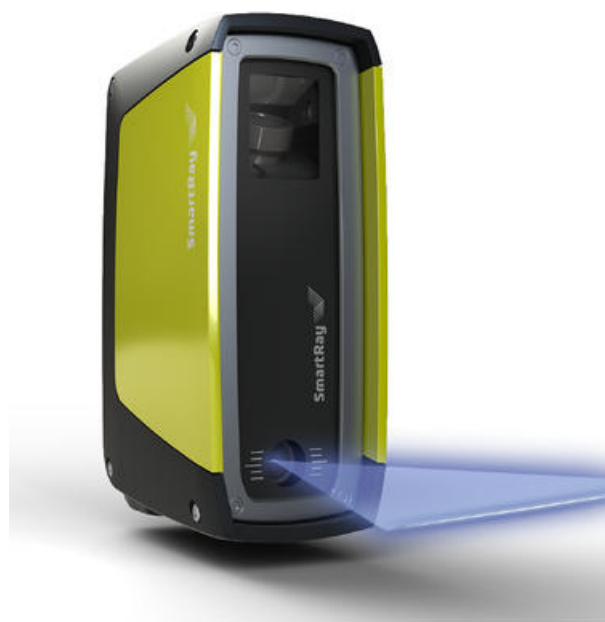


## ECCO SMARTRAY 3D-CAMERA

SR95.100

SmartRay™ ECCO 95.100

- Inspection, guidance and measurement applications
- Ultra modern laser triangulation technology
- Wide selection of models to suit all needs
- Gigabit Ethernet interface



### PRODUCT DESCRIPTION

### SPECIFICATIONS

<b>3D point rate</b>	0.7 to 15 million points/sec
<b>Ambient light max</b>	10000 lx
<b>EMC</b>	EN61000-6-2, EN61000-6-4
<b>Field of view max</b>	124 mm
<b>Field of view min</b>	72 mm
<b>Inputs</b>	4 x Inputs, 5 – 24 VDC, Quadrature Encoder (AB-Channel, RS-422 Standard)
<b>Interface</b>	Gigabit Ethernet ( 1 Gbit/ sec)
<b>IP Class</b>	IP65
<b>Laser Class</b>	2M, 3M
<b>Laser wavelength</b>	450 nm
<b>Maximum points / 3D-profile</b>	1920
<b>Measuring range</b>	100 mm
<b>Outputs</b>	2 x Outputs, 24 VDC (max. 20 mA)
<b>Protection Class</b>	III according to EN 61040-3
<b>Resolution max (Y)</b>	70 µm
<b>Resolution max (Z)</b>	12 µm

<b>Resolution min (Y)</b>	42 $\mu$ m
<b>Resolution min (Z)</b>	5 $\mu$ m
<b>Scan rate</b>	8000 Hz
<b>Temperature range bearing, from</b>	-20 °C
<b>Temperature range bearing, to</b>	70 °C
<b>Temperature range to</b>	40 °C
<b>Trigger</b>	START Trigger support on Input 1-4, DATA Trigger support on Quadrature Encoder Input (Max. DATA trigger rate: 100 kHz), DATA Trigger support on Input 2, 3 (Max. DATA trigger rate: 10 kHz)
<b>Weight</b>	490 g
<b>Voltage</b>	24 VDC, $\pm$ 15 % ripple , 8.5 W
<b>Working Distance</b>	150 mm

