

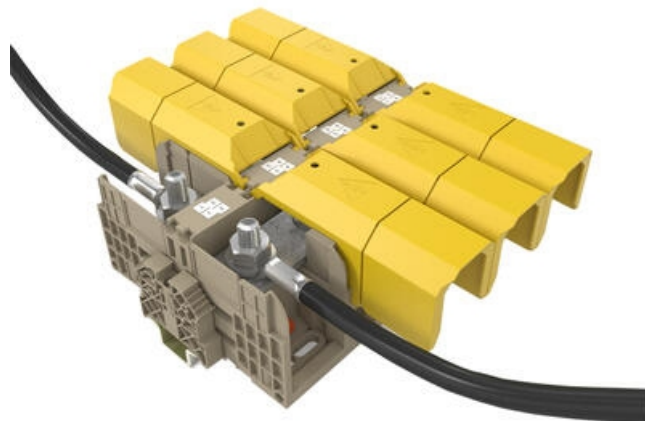
HIGH-POWER STUD TERMINALS - HSKG 35-300MM²

HSKG

17170.2

HSKG 35/M6/B/B, 35mm² Dual M6 stud terminal

- Dual stud connection
- Direct & TS35 mount
- IP20 with Gull Wing Covers fitted
- Material polyamide 6.6
- Fire-resistance class V0



PRODUCT DESCRIPTION

The newest generation of stud terminals from CONTA-CLIP offers secure connections for all high power conductors.

The HSKG stud terminals are available with stud sizes of with M6, M8, M10, M12 and rated current is from 125 A to 520A at a rated voltage of 1000 V.

The wire connection range is from 2.5 mm² to 300 mm². and crimped lugs are used to fit the cables to the busbar using the hexagonal nut with built in washer.

When used together with the ADH hinged covers, the HSKG stud terminals provide outstanding finger and touch protection. The ADH cover is easy to mount; it simply snaps into the side walls of the stud terminals as it is closed.

In this quick and reliable way, touch-safe protection of the terminal points is always guaranteed.

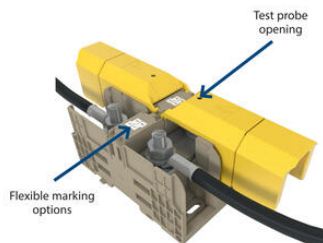
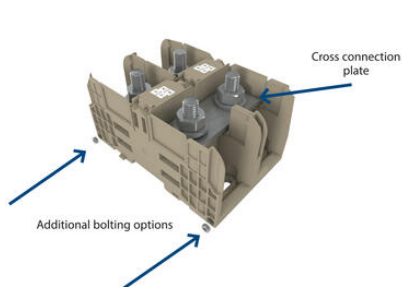
Added features include -

- Measuring Point located on the ADH covers to allow probes to be inserted without exposing the conductor.
- Direct or DIN Rail Mount
- Interlocking housings for improved stability
- Cross connectable

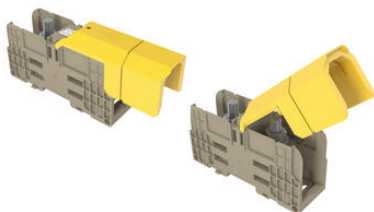
SPECIFICATIONS

Approvals	UL, CSA, CSA US, cUL, KEMA KUR
Color	Beige
Connections	2
Contact clamping area	≤ 50 mm ²
Contamination degree	3
Country of origin	DE
Cross-Section	35 mm ²
CSA test standard	C22.2 No 158
CSAus test standard	UL 1059
cUL test standard	C22.2 No 158
DIN 46234 / 1 cable lug per side, max.	50 mm ²
DIN 46234 / 1 cable lug per side, min.	2,5 mm ²
DIN 46235: 1 cable lug per side, max.	25 mm ²
DIN 46235: 1 cable lug per side, min.	6 mm ²
Flamklass	UL94-V0
Height TS 35/7.5	51 mm
Height with TW/ADH	60 mm
Insulation Material	Polyamide 6.6
KEMA KEUR test standard	EN 60947-7-1:2028
Length	107 mm
Length with TW/ADH	131 mm
Mounting	TS 35/7,5
Number of levels	1
Operating temperature from	-40 °C
Operating temperature to	120 °C
Overvoltage category	III
Pack Size	10
Rated Current CSA	130 A
Rated current CSAus	130 A
Rated current cUL	130 A
Rated Current IEC	125 A

Rated impulse voltage	8 kV
Rated wire cross section from (AWG)	14
Rated wire cross section to (AWG)	1/0
Rated voltage CSAus	1000 V
Rated voltage cUL	1000 V
Rated Voltage IEC	1000 V
Rated Voltage To UL	1000 V
Stud size	M 6
Tariff code	85369010
Torque max	6 Nm
Torque Min	3 Nm
UL test standard	UL 1059
Weight	88,6 g
Width	27 mm
Voltage CSA	1000 V

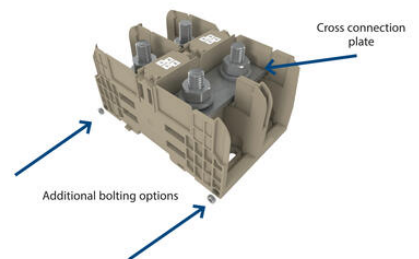


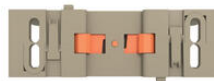
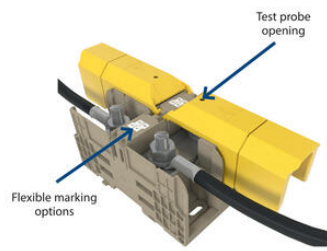
TS mount / direct mount



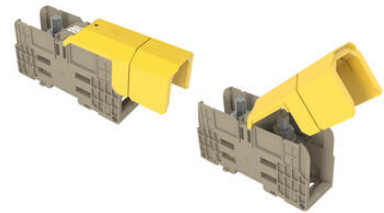
Using the ADH covers

Individual ADH... covers are available for each width of stud terminal. They are designed for the different sizes and the corresponding clearance and creepage distances. It is also possible to shorten the covers along pre-creased breakage points. The ADH cover is attached by pressing the cover down onto the base terminal so that the cover snaps onto the terminal.





TS mount / direct mount



Using the ADH covers

Individual ADH... covers are available for each width of stud terminal. They are designed for the different sizes and the corresponding clearance and creepage distances. It is also possible to shorten the covers along pre-created breakage points. The ADH cover is attached by pressing the cover down onto the base terminal so that the cover snaps onto the terminal.