

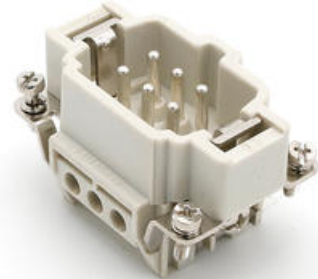
INSERTS

Series B, single and double-lever

7306.6103.0

6P male insert, 16A, 500V, screw

- 10A or 16A maximum current per contact
- Voltage up to 500 V
- Screw, spring, push-in or crimp termination
- Pole number between 6 and 108



PRODUCT DESCRIPTION

SPECIFICATIONS

| | |
|--------------------------------------|----------------------|
| Connection Thread | Screw terminal |
| Cross-Section Max | 2,5 mm ² |
| Material | Polycarbonate |
| Materials Contacts | Silver plated copper |
| Number of poles | 6 |
| Operating Voltage AC / DC Max | 500 V |
| Rated Current | 16 A |
| Size | 6B |