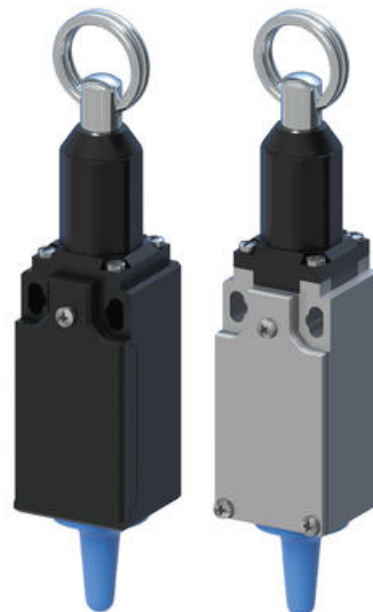


WIRELESS DRAWWIRE SWITCH

APWT98RFH8

- Wirelessly connected to a relay unit, range up to 80m
- No batteries
- IP66



PRODUCT DESCRIPTION

SPECIFICATIONS

IP Class	IP66
Temperature range to	70 °C
Temperature range from	-25 °C
Material of body	Plastic

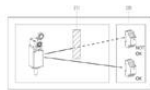


Installation tips

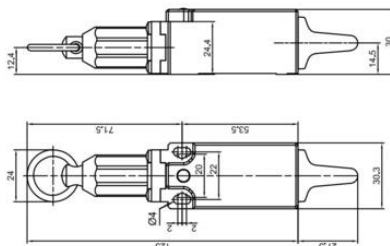
The wireless signal works at its best when the space is free between the receiver and the transmitter. Eliminate as far as possible obstacles, mostly if they are metallic!



• CONFIG



Receiver	Transmitter
Receiver 1 (1000)	Transmitter 1 (1000)
Receiver 2 (1000)	Transmitter 2 (1000)
Receiver 3 (1000)	Transmitter 3 (1000)
Receiver 4 (1000)	Transmitter 4 (1000)
Receiver 5 (1000)	Transmitter 5 (1000)
Receiver 6 (1000)	Transmitter 6 (1000)
Receiver 7 (1000)	Transmitter 7 (1000)
Receiver 8 (1000)	Transmitter 8 (1000)
Receiver 9 (1000)	Transmitter 9 (1000)
Receiver 10 (1000)	Transmitter 10 (1000)

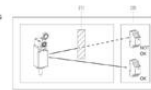


Installation tips

The wireless signal works at its best when the space is free between the receiver and the transmitter. Eliminate as far as possible obstacles, mostly if they are metallic!



• CONFIG



Receiver	Transmitter
Receiver 1 (1000)	Transmitter 1 (1000)
Receiver 2 (1000)	Transmitter 2 (1000)
Receiver 3 (1000)	Transmitter 3 (1000)
Receiver 4 (1000)	Transmitter 4 (1000)
Receiver 5 (1000)	Transmitter 5 (1000)
Receiver 6 (1000)	Transmitter 6 (1000)
Receiver 7 (1000)	Transmitter 7 (1000)
Receiver 8 (1000)	Transmitter 8 (1000)
Receiver 9 (1000)	Transmitter 9 (1000)
Receiver 10 (1000)	Transmitter 10 (1000)

