

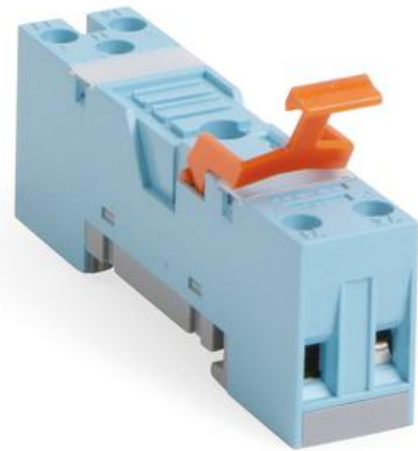
SOCKET FOR C10 INTERFACE RELAYS

1-pole

S-10

Socket For C10 Interface Relay 5 Pin Screw

- I/O connection, contact connection on one side
- Small construction dimensions, only 15.6 mm wide
- Strappable A2 for block mounting
- Robust screws and terminal openings



PRODUCT DESCRIPTION

SPECIFICATIONS

Switching Capability Voltage	250 V
Breaking Capacity Current	10 A
Isolation conn./conn.	2500 V
Isolation connection/rail	5000 V
Material	Lexan
Torque Connection	0,7 Nm
Screw size	M3, Pozi
Cross section stranded	0,35-2,5 mm ²
Temperature range from	-40 °C
Temperature range bearing, from	-40 °C
Temperature range bearing, to	80 °C
Temperature range to	60 °C
Weight	23 g

