

FIEPOS EFUSE

3x 380-480 V AC/24-28 V DC, 300 or 500 W

FPT300.246-042-101

IP54 Power supply 3x380-480 V AC/24 V DC, 300 W,
NEC Class 2

- IP54 or IP65/IP67
- Up to 4 switchable outputs
- Output power 360/600 W
- 600/1000 Wpeak 5s
- IP54



PRODUCT DESCRIPTION

The FPT300 is an industrial grade power supply for 3-phase networks incorporated in a rugged wall-mount housing with IP54 protection.

It provides two to four stabilized outputs that are galvanically separated from the input.

The negative potential of the outputs is permanently connected to PE within the unit.

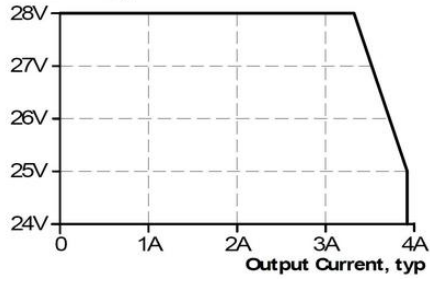
The most outstanding features of the FPT series are the compact size, the wide operational temperature range, the extremely low input inrush current and the very high efficiencies, which are achieved by various design technologies.

SPECIFICATIONS

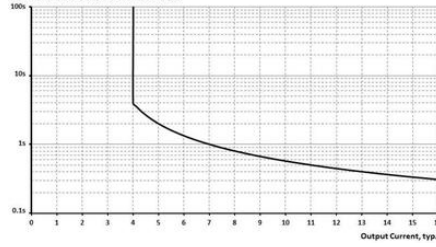
Number of phases	3
Input voltage AC	380-480
Input voltage ac min	323 V AC
Input voltage ac max	552 V AC
Inrush current at 400 V ac typical	2 A
Power Factor at 400 V AC, full load. Typical	0,9
Supply Frequency	50-60 Hz ±6 %
Power consumption at 400 V ac	0,53 A
Output voltage	24 V DC
Output voltage min	24 V DC
Output voltage max	28 V DC
Output Current	12,5 A

Output current max	25 A
Max. Current per output	3,9 A
Effect	300 W
Total output power <+55°C	300 W
Total output power <+70°C	150 W
Total output power <1 s	600 W
Total output power <1 min	450 W
Power drop from +55 °C to + 70 °C	6 W/°C
Ripple. max	100 mV pp
Temperature Range Without Derating From	-25 °C
Temperature Range Without Derating To	55 °C
Back-feeding loads	35V / 4,3 J
Efficiency At 400 V AC. Typical	93,5 %
Efficiency At 400 V AC, full load. Typical	95,1 %
Lifetime at 400 V ac, full load and +40 ° C	312000 h
MTBF (IEC 61709) 400 V ac, max loan, +40 °C	625000 h
Width	182 mm
Height	272 mm
Depth	70 mm
Weight	1,55 kg
Output connectors	4x M12-A
DC-OK/IO-link connector	M12-A
Input connector	HAN Q5/0
Series	FIEPOS eFuse
Approvals	CB, CE, cULus, NEC Class 2
DC relay output	Yes
IO-LINK	No
Material Protection	Aluminium
Hold-up time at 400 V AC, full load. Typical.	25 ms
IP Class	IP54
Active Transient	Yes

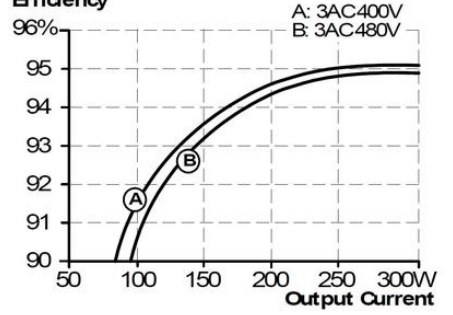
Output Voltage



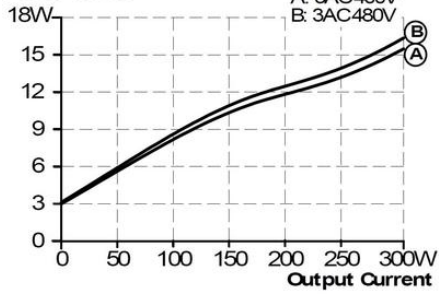
Time delay before switch off at overload, typ.



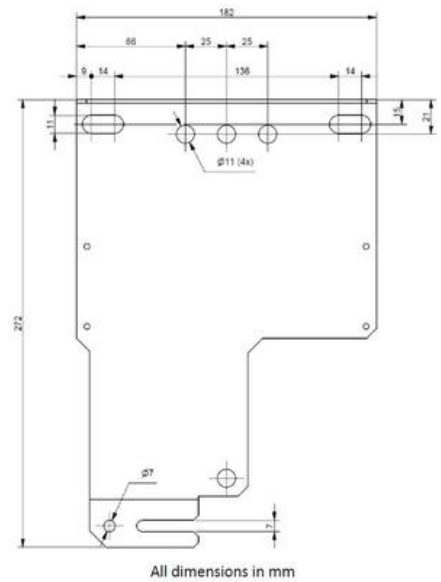
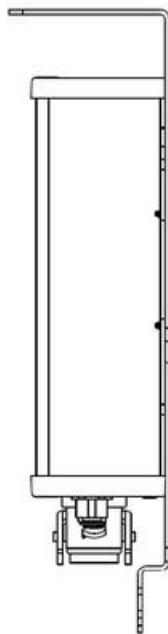
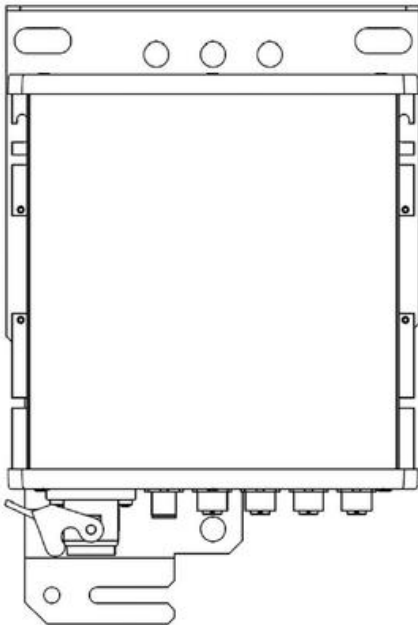
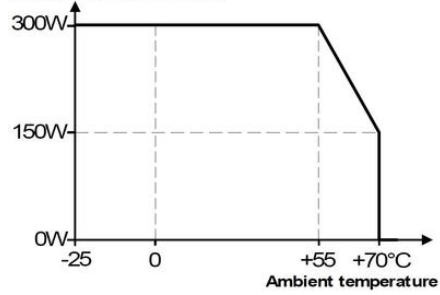
Efficiency



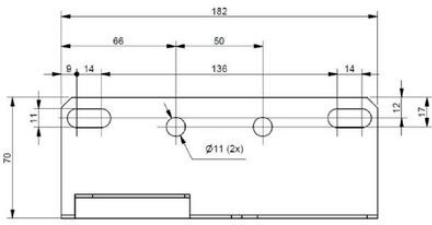
Power Losses



Allowed output power



All dimensions in mm



All dimensions in mm

