

## HOKUYO UTM SCANNING RANGEFINDER

UTM-30LX

Scanner, 0,1-30m, distance data output, USB

- Detecting distance 30 m
- Scanning time 25ms
- Scanning angle 270°
- USB or Ethernet interface



### PRODUCT DESCRIPTION

30m and 270° scanning range. Suitable for robots with higher moving speed because of the longer range and fast response.

- Long Detection range: 30m
- Wide Angle: 270°
- Outdoor Environment
- Compact and Light: W60xD60xH87mm, 370g

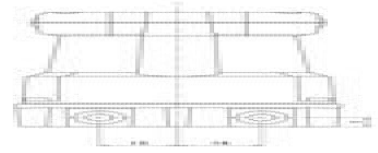
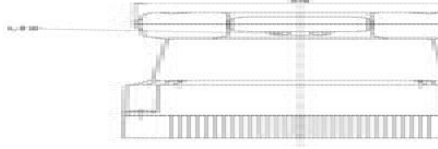
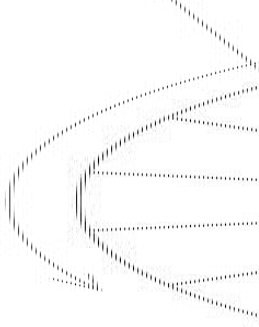
### SPECIFICATIONS

<b>Supply voltage</b>	12VDC±10%(Current consumption:Max:1A,Normal:0.7A)
<b>Sensing distance min</b>	0,1 m
<b>Sensing distance max</b>	30 m
<b>Scan speed</b>	25 ms
<b>Scanning Angle</b>	270 °
<b>Resolution</b>	0.25°(360°/1,440 steps)
<b>Width</b>	60 mm
<b>Length</b>	60 mm
<b>Height</b>	87 mm
<b>Temperature range from</b>	-10 °C
<b>Temperature range to</b>	50 °C

Weight

0,37 kg

0000 0000 0000 0000 0000 0000



0000 0000 0000 0000 0000 0000

