

## DATALOGIC - SR23 - FORK SENSOR

SR23-2-IR-PH

SR23-2-IR-PH Fork Sensor Cabled

- 50 x 5mm fork gap
- 12 kHz frequency
- Dynamic or static setting
- M8 connector or embedded cable



### PRODUCT DESCRIPTION

The SR23 series, with 50 x 5mm slot size, are designed for the detection of normal labels, as well as thick booklet and multi-layer ones, used increasingly in the food and pharmaceutical industries. The series distinguishes itself through its fast 40µs response time and its switching frequency reaching 12kHz, and offers an easy static or dynamic procedure setting, via SET push-button or remote input.

The emission is infrared LED with a narrow light beam, allowing resolutions up to 0,5mm. All models are characterised by a compact metallic housing and by a M5 threaded hole, a Ø5x8 slotted hole, and a dovetail guide. 2m embedded cable or M8 4-pole connector versions are available, and with NPN or PNP outputs.

### FEATURES & BENEFITS

- 50 x 5mm slot size: normal labels, booklet and multi-layer labels
- Teach-in or dynamics setting
- 12 kHz switching frequency for high detection repeatability
- Compact housing suitable for application with reduced spaces
- 0.5mm minimum size label/gap for high detection reliability for a precise reading

### APPLICATIONS

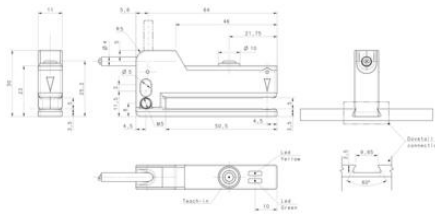
- Processing and Packaging machinery
- Automatic labellers
- Print and apply systems

## SPECIFICATIONS

<b>Approvals</b>	CE, UL
<b>Dimension (mm)</b>	30 x 63 x 10
<b>Electrical connection</b>	Cable 2 m
<b>Fork Depth</b>	50 mm
<b>Fork gap</b>	5 mm

<b>Frequency</b>	12000 Hz
<b>IP Class</b>	IP65
<b>LED indicator</b>	Yes
<b>Lens material</b>	PC
<b>Light type</b>	IR LED
<b>Material of body</b>	Aluminium, PBT
<b>Multi Label Reading</b>	Yes
<b>Output</b>	PNP
<b>Output current max</b>	0,1 A
<b>Photocell technology</b>	Label fork
<b>Power consumption max</b>	0,03 A
<b>Reaction time</b>	0,04 ms
<b>Supply voltage</b>	10-30 V DC
<b>Temperature range from</b>	-20 °C
<b>Temperature range to</b>	55 °C
<b>Weight</b>	85 g

BROWN	1	+ 10...30 V DC
WHITE	2	REMOTE
BLACK	3	OUTPUT
BLUE	4	0 V



INDICATORS AND SETTINGS

