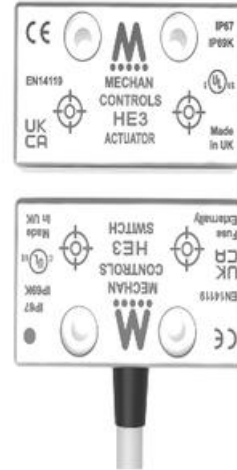


## MECHAN HE3 ELECTRONIC HALL SAFETY SWITCH

HE3-21-DC-03M

Electronic safety switch, 2 NO+1 NC, 3m cable

- Electronic, utilizes Hall-technology
- Coded magnetic safety switch
- Seal made of ABS, IP67
- Switching distance 7mm
- LED indication

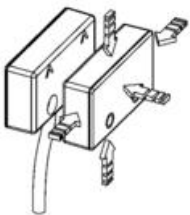


### PRODUCT DESCRIPTION

The HE safety switches have up to 2 x N/O + 1 N/C bidirectional solid state outputs along with a built in LED(s) for indication. When installed on a machine guard, power is applied, and the switch and actuator are within the specified operating range, the N/O Outputs will be closed, the N/C Output will be open.

- 2 normally open + 1 normally closed output
- Solid state bi-directional outputs
- 24V dc operation
- LED indication
- Face to Face Operation

Illustration of HE3 face-to-face installation



### SPECIFICATIONS

<b>Safety contact NO</b>	2
<b>Signal contact NC</b>	1
<b>Contact Current Max</b>	400 mA
<b>Activation Distance From</b>	7 mm
<b>Activation Distances</b>	16 mm

<b>Material Case</b>	ABS plastic
<b>IP Class</b>	IP67
<b>Temperature range from</b>	-25 °C
<b>Temperature range to</b>	55 °C
<b>B10d</b>	2,0 milj.

